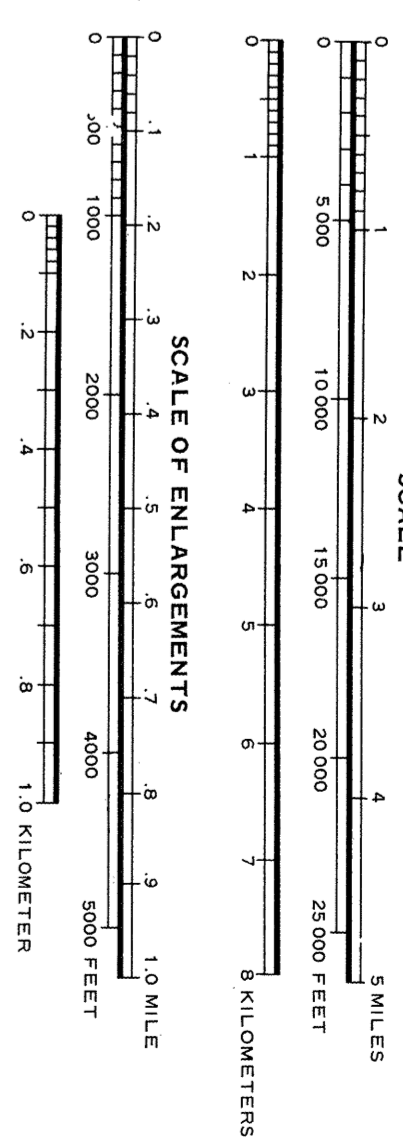
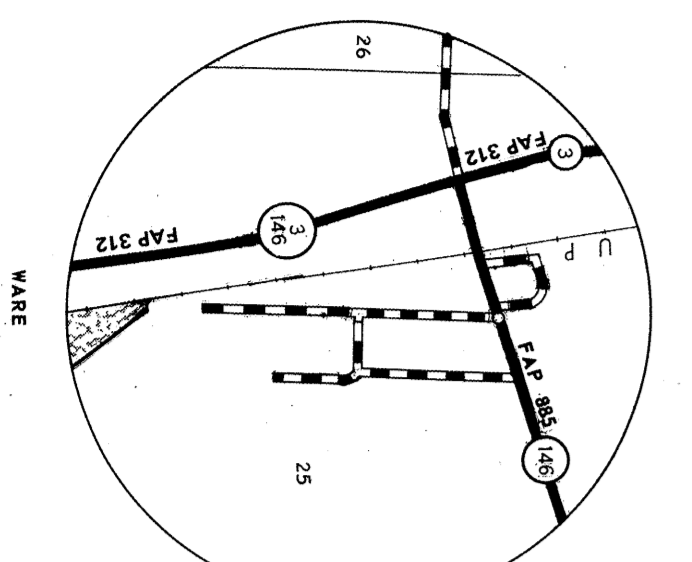
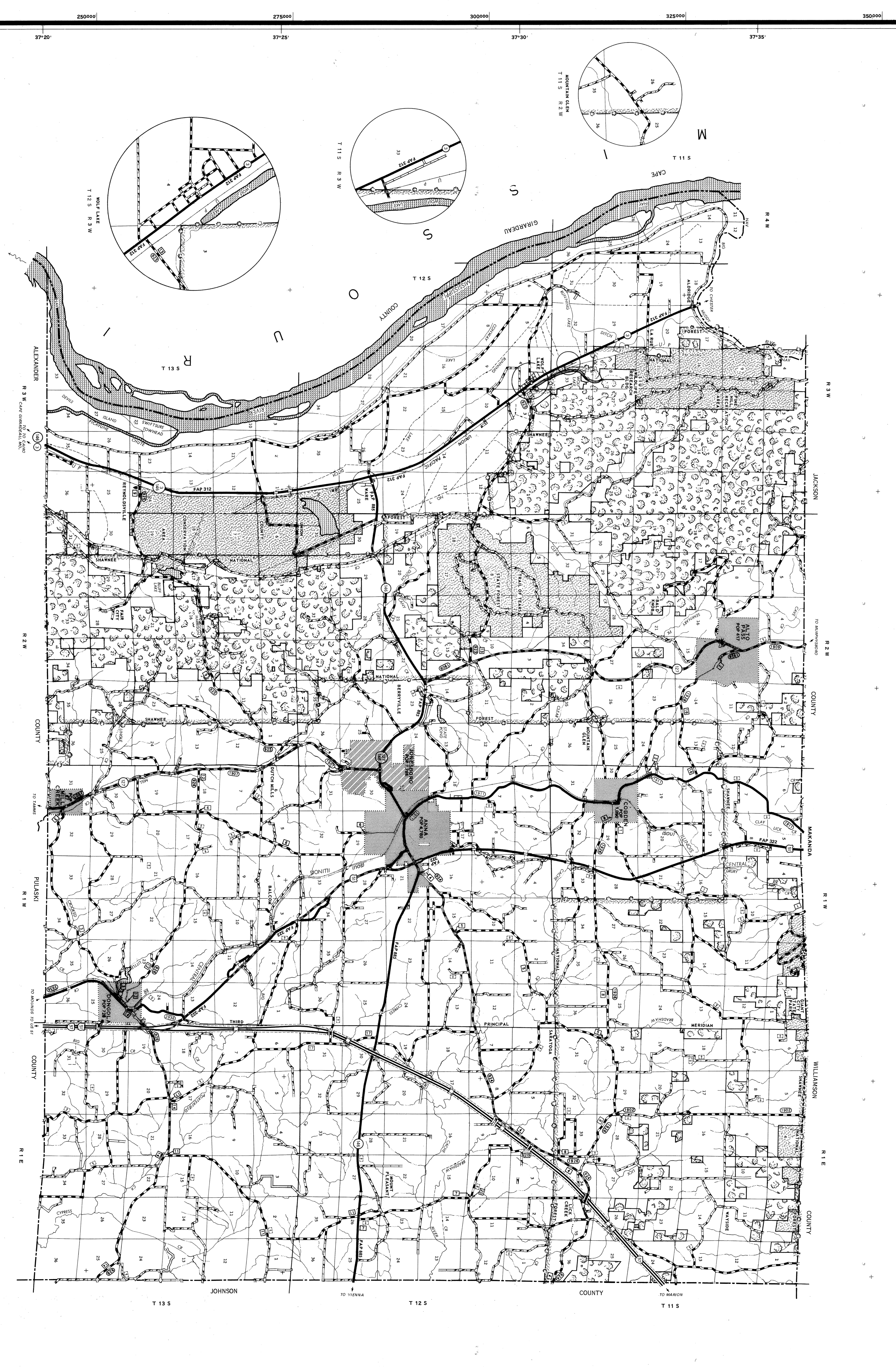


GENERAL HIGHWAY MAP UNION COUNTY ILLINOIS

PREPARED BY THE
DEPARTMENT OF TRANSPORTATION
OFFICE OF PLANNING AND PROGRAMMING
IN COOPERATION WITH THE
U. S. DEPARTMENT OF TRANSPORTATION
FEDERAL HIGHWAY ADMINISTRATION



- ### LEGEND
- #### CLASSIFICATION OF ROADS AND STREETS
- MARKED ROUTE: U.S. H.L. AND INTERSTATE
 - HIGHWAY WITH CONTROL OF ACCESS
 - ROADS INDICATE FRONTAGE ROAD
 - PAVED DIVIDED
 - PAVED UNDIVIDED
 - GRAVEL DIVIDED
 - GRAVEL UNDIVIDED
 - ROADS WITH TYPE
 - LOW TYPE
 - SOIL SURFACE
 - GRADED AND DRAINAGE
 - UNIMPROVED
 - PA PRIMARY ROUTE
 - PA SECONDARY
 - COUNTY HIGHWAY
 - CITY HIGHWAY
 - COUNTY SEAT
 - INLET OF CONGESTED AREA
 - OTHER
- #### STRUCTURES, NAVIGATION AND DRAINAGE
- HIGHWAY BRIDGES OVER 20 FT. CLEAR SPAN
 - FREE FERRY
 - PAVED WITH COCK
 - PAVED WITH OTON OR BRIDGED STREAM
 - CANAL
 - BONDRY LINES AND SCREENS
 - CITY, TOWNSHIP OR ROAD DISTRICT
 - NATIONAL FOREST PROTECTED AREA
 - FOREST PRESERVE OR PARK AREA
 - MILITARY RESERVATION
 - SCHEDULED SERVICE
 - MULTILANE
 - AIRPORTS
 - OTHER
 - SEAPLANE BASE
 - DIAMOND
- #### CULTURAL FEATURES
- SCHOOL
 - HOSPITAL
 - POST OFFICE
 - CHURCH
 - CEMETERY
 - POWER PLANT
 - CORRECTIONAL INSTITUTION
 - RECY AREA
 - SCENIC SITE
 - STATE HIGHWAY POLICE STATION
 - NATIONAL FOREST
 - PARK GROUND
 - TOLL PLAZA
 - WEIGHT STATION



1:25 R 3 W

89-20

720000

89-25

720000

89-30

720000

89-35

720000

ORIGINAL DATE	REVISED DATE
1996	
BY	DATE
MJM	12-31-97
MJM	12-31-98
MJM	12-31-99

FOR DETAILED INFORMATION OF CONGESTED AREAS SEE CITY MAP

NOTE: UNION COUNTY OPERATES AS A COUNTY UNIT ROAD DISTRICT.

POPULATION 1768 1996 CENSUS

TOTAL AREA 483 SQUARE MILES

CONTROL: U.S. COAST AND GEODENSIC SURVEY; U.S. GEOLOGICAL SURVEY; U.S. PUBLIC LANDS SURVEY; BULLIARD ALIGNMENTS; AERIAL PHOTOGRAPHS; AND DIVISION OF HIGHWAYS ROAD INVENTORY.

GENERAL HIGHWAY MAP UNION COUNTY, ILLINOIS